



SEAFRONT APARTMENT

WITH GARDEN

SITGES

1.800.000 €

Reference AH00214

Built area: 226 m²

Living area: 134 m²

Bedrooms: 4

Bathrooms: 3

Garden area: 220 m²

Private parking

Communal area and pool

Walking distance to town



Description

This splendid ground floor apartment in Sitges, offers a unique blend of coastal living and contemporary design. This two-story residence is positioned in the first line of the sea, providing unparalleled views and a tranquil atmosphere.

The first floor boasts two bedrooms, with one of them being en suite for added privacy. A second shower room ensures convenience for both residents and guests.

hola@applehouses.es +34 619 700 598 +34 610 221 417



SEAFRONT APARTMENT WITH GARDEN



Both bedrooms open up to a back terrace, offering views of the communal garden and expansive pool. The first floor also features a small office space seamlessly integrated into the living room area. The open-plan American kitchen, complete with a convenient laundry room and access to the garden.

The living room, featuring a charming chimney, seamlessly connects to a large private garden with sea views, creating a seamless indoor-outdoor living experience. The garden offers a L shape terrace with space for BBQ and summer dinners

Nestled at the back of the garden, a generously sized storage room provides ample space for stowing away belongings.

Venturing to the basement reveals two additional bedrooms and another shower room and toilet, providing flexibility for various living arrangements. The basement also offers a versatile space that can be used as an office, catering to the needs of remote work or creative pursuits and a lot of storage space. The apartment offers a parking space for one car and some space for scooters.



SEAFRONT APARTMENT

WITH GARDEN



Location description

Sitges is a small town located about 40 kilometers southwest of Barcelona and very well connected to the Airport.El Prat. It is internationally recognized for its Film Festival and Carnival. It is located in a beautiful enclave between the Mediterranean Sea and the Natural Park of Garraf. Its economy is based on tourism and culture and it is also a famous place for its popular beaches, gastronomy, nightlife, golf courses, marinas and historical places. It has a population of approximately 28,000 inhabitants and an important international community.



SEAFRONT APARTMENT WITH GARDEN





SEAFRONT APARTMENT WITH GARDEN





SEAFRONT APARTMENT WITH GARDEN





SEAFRONT APARTMENT WITH GARDEN





SEAFRONT APARTMENT WITH GARDEN





SEAFRONT APARTMENT WITH GARDEN





SEAFRONT APARTMENT WITH GARDEN





SEAFRONT APARTMENT WITH GARDEN





SEAFRONT APARTMENT WITH GARDEN





SEAFRONT APARTMENT WITH GARDEN





SEAFRONT APARTMENT WITH GARDEN





SEAFRONT APARTMENT WITH GARDEN





SEAFRONT APARTMENT WITH GARDEN





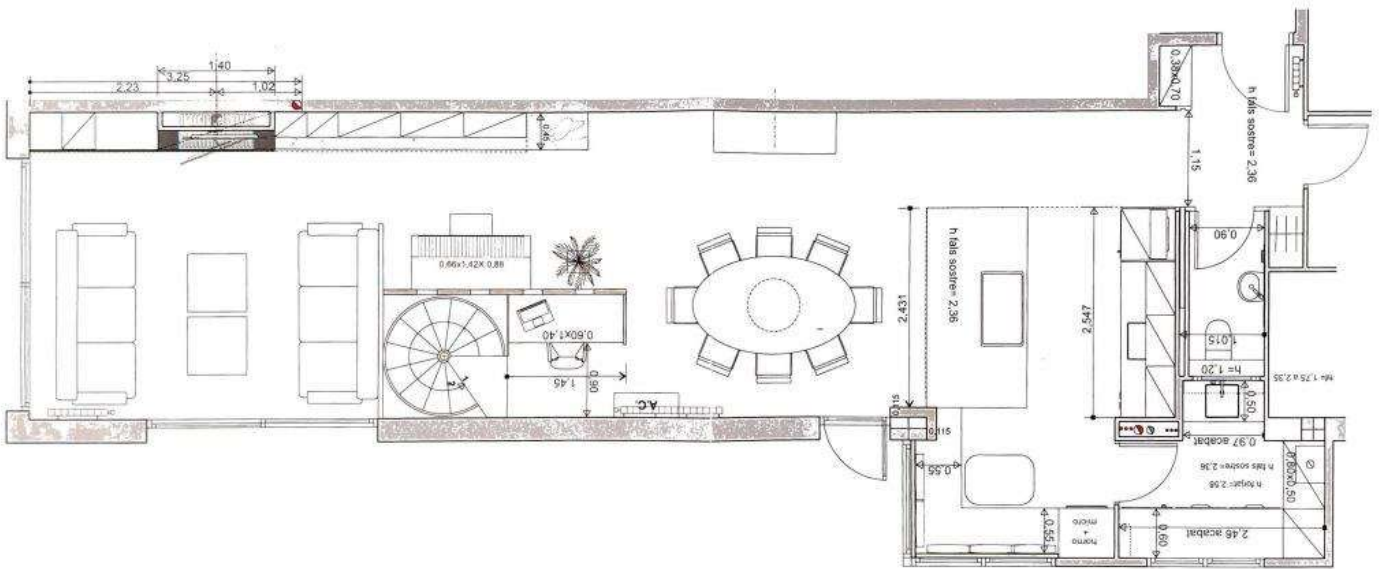
SEAFRONT APARTMENT WITH GARDEN





SEAFRONT APARTMENT WITH GARDEN

MAIN FLOOR



BASEMENT FLOOR

