



CENTRALLY LOCATED
TOWNHOUSE
SITGES
980.000 €
Reference AH00218

Built area: 166 m² (1,786 sqft)

Usable area: 137 m² (1,474 sqft)

Bedrooms: 5 (3 ensuite)

Bathrooms: 4+1

Garden area: 25.50 m² (274 sqft)

Air conditioning

Private parking and storage room

Gated community with pool



Virtual visit

<https://matterport.com/discover/space/D5NBpCMKQj9>

Description

Situated in the heart of Sitges' Poble Sec district, this townhouse stands prominently within a communal setting, offering three floors of modern comfort. The ground floor features a spacious living and dining area that seamlessly extends to a private garden and the communal pool area. An adjoining spacious kitchen and a convenient guest bathroom complete this level.

hola@applehouses.es +34 619 700 598 +34 610 221 417



CENTRALLY LOCATED TOWNHOUSE SITGES



Ascending to the first floor unveils three bedrooms, including a luxuriously appointed suite boasting a walk-in closet for added convenience. A well-equipped shared bathroom serves these rooms.

The topmost floor offers a private enclave, housing two additional ensuite bedrooms. One of these rooms gracefully opens onto a terrace, providing serene views overlooking the inviting communal pool.

Convenience is further highlighted by the inclusion of a designated parking spot and a storage room, catering to the demands of modern living without compromising on practicality or elegance.

This offering encompasses the convenience of an allocated parking spot and a storage area within the same building, meeting the requirements of contemporary living.

An additional advantage is its possession of a tourist license, allowing for transfer—a rare and valuable feature in Sitges.

hola@applehouses.es +34 619 700 598 +34 610 221 417



CENTRALLY LOCATED TOWNHOUSE SITGES



Location description

Sitges is a small town located about 40 kilometers southwest of Barcelona and very well connected to the Airport, El Prat. It is internationally recognized for its Film Festival and Carnival. It is located in a beautiful enclave between the Mediterranean Sea and the Natural Park of Garraf. Its economy is based on tourism and culture and it is also a famous place for its popular beaches, gastronomy, nightlife, golf courses, marinas and historical places. It has a population of approximately 28,000 inhabitants and an important international community.

"Poble Sec in Sitges is a vibrant and welcoming neighborhood known for its picturesque atmosphere and blend of tradition and modernity. Situated close to the city center, it offers a delightful mix of narrow streets, peaceful squares, and an array of local shops, bars, and restaurants. It's cherished for its authenticity, where daily life intertwines with local culture, creating a unique and appealing environment for both residents and visitors alike



CENTRALLY LOCATED TOWNHOUSE SITGES





CENTRALLY LOCATED TOWNHOUSE SITGES



hola@applehouses.es +34 619 700 598 +34 610 221 417



CENTRALLY LOCATED TOWNHOUSE SITGES





CENTRALLY LOCATED TOWNHOUSE SITGES





CENTRALLY LOCATED TOWNHOUSE SITGES





CENTRALLY LOCATED TOWNHOUSE SITGES





CENTRALLY LOCATED TOWNHOUSE SITGES

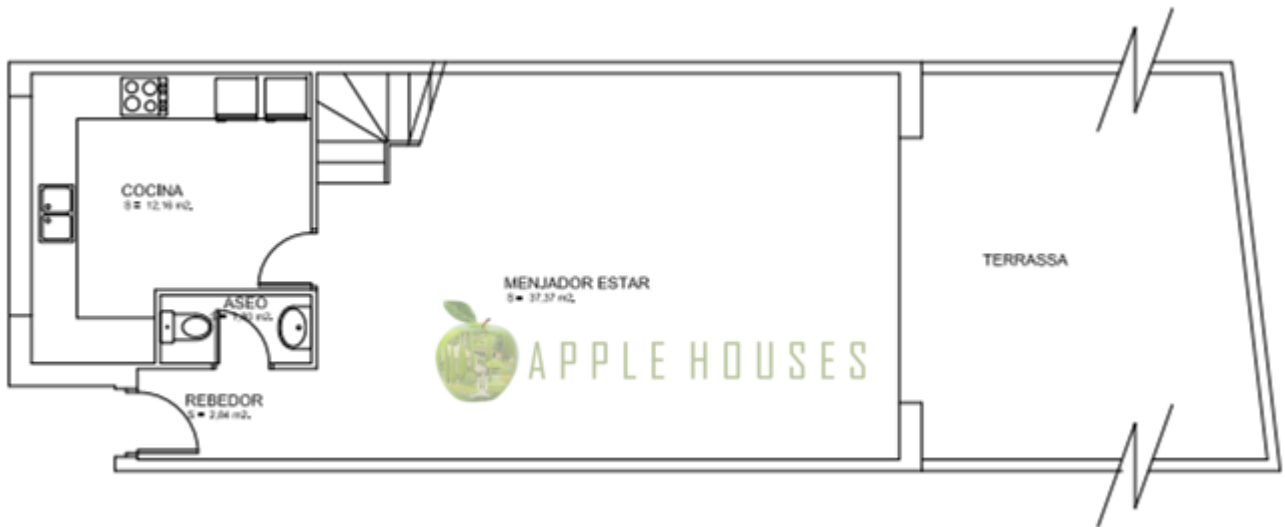




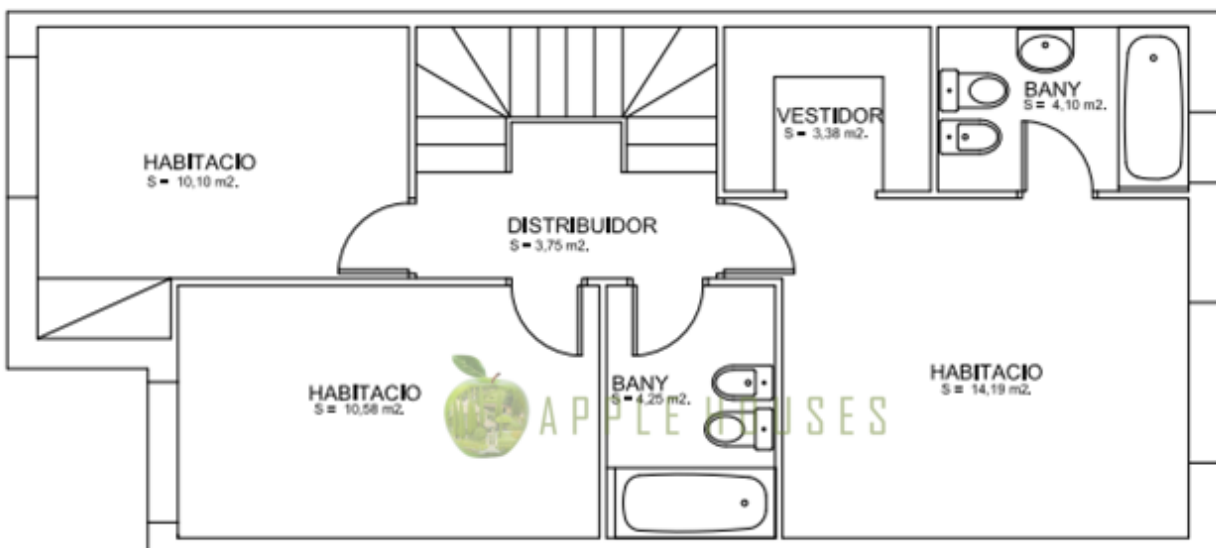
CENTRALLY LOCATED TOWNHOUSE SITGES

Floor plans

Ground floor



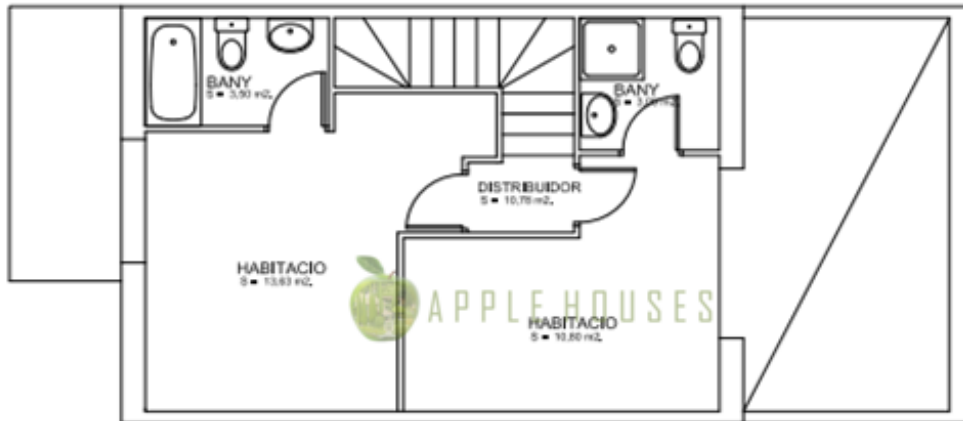
First floor





CENTRALLY LOCATED TOWNHOUSE SITGES

Second floor



Energy information

ESCALA DE LA QUALIFICACIÓ ENERGÈTICA	Consum d'energia kWh/m ² any	Emissions kg CO ₂ / m ² any
A més eficient		
B		
C		
D		
E	180	37
F		
G menys eficient		

The information provided by the agency is offered by third parties and is believed to be reliable but is not guaranteed and must be independently verified. The buyer must verify the areas, dimensions and distances since they are only approximate. The expenses of patrimonial transmission (ITP), VAT, Notary and Land Registry are not included in the sale price and are borne by the buyer.

hola@applehouses.es +34 619 700 598 +34 610 221 417