



NEW BUILD PENTHOUSE

LA PLANA NORTH

SITGES

695.700€

Reference AH00202

Built area: 104 m²

Living space : 84 m²

Bedrooms : 2

Bathrooms: 2

Terrace area: 117 m²

Lift

Year of construction : 2022

Terrace solarium



Description

This spectacular newly built corner penthouse is characterised by its exterior spaces, style and light. The interior is designed in a modern and minimalist style that enhances the elegant feeling of space. It consists of a large living-dining room and modern integrated kitchen, fully glazed, with plenty of natural light and with access to the 65m² corner terrace, two double bedrooms, one en-suite (fitted wardrobes lined with melamine) and another complete bathroom. All the rooms are exterior, with access to the main terrace or have their own balcony.

The jewel in the crown of this penthouse is the large solarium terrace for private use at the top of the building. With stunning unobstructed views and the sea in the background, this terrace is equipped with a barbecue and is prepared for the installation of a swimming pool, making it a perfect oasis to relax and enjoy the sun and the sea breeze.



NEW BUILD PENTHOUSE

SITGES



It is located in the northern part of La Plana, a quiet area 8 minutes walk from the centre of Sitges, train and bus station. It is surrounded by a park, promenade and all the services: supermarkets, pharmacy, restaurants, sports areas and horse riding.

In short, this newly built penthouse is a real dream for those who are looking for a quiet life on the Mediterranean coast. With its exceptional features and its location in the beautiful town of Sitges, this flat is a unique opportunity not to be missed.

Other features

Aerothermal heating

Terrace prepared for jacuzzi or swimming pool

Private solárium

Council taxes: 518 €/ year



NEW BUILD PENTHOUSE

SITGES



Location description:

Sitges is a small town located about 40 kilometers southwest of Barcelona and very well connected to the Airport.El Prat. It is internationally recognized for its Film Festival and Carnival. It is located in a beautiful enclave between the Mediterranean Sea and the Natural Park of Garraf. Its economy is based on tourism and culture and it is also a famous place for its popular beaches, gastronomy, nightlife, golf courses, marinas and historical places. It has a population of approximately 28,000 inhabitants and an important international community.



NEW BUILD PENTHOUSE

SITGES





NEW BUILD PENTHOUSE

SITGES





NEW BUILD PENTHOUSE

SITGES





NEW BUILD PENTHOUSE

SITGES





NEW BUILD PENTHOUSE

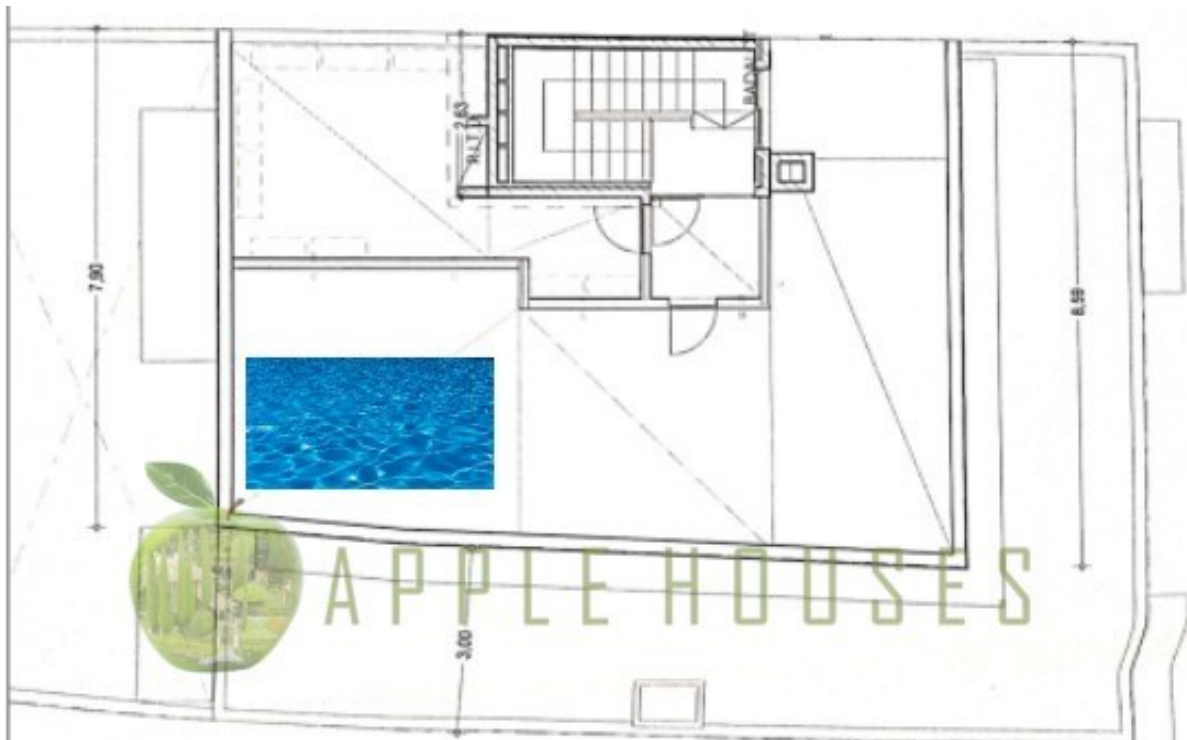
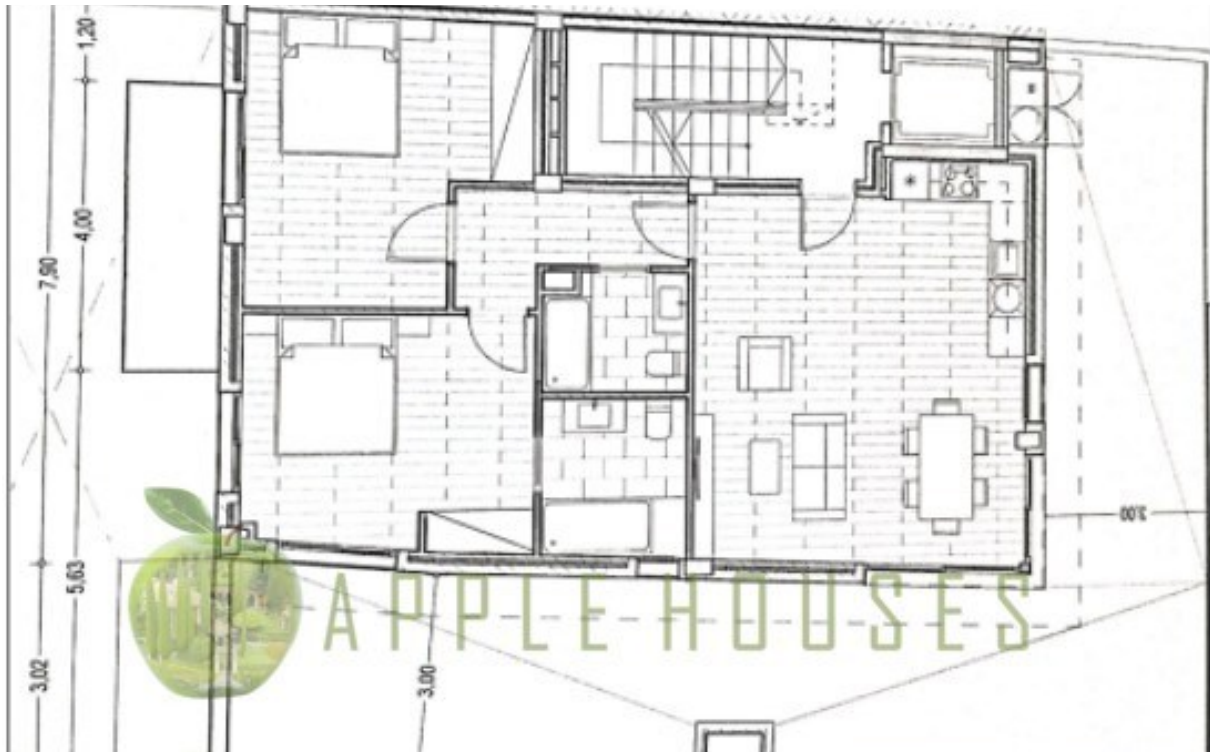
SITGES





NEW BUILD PENTHOUSE

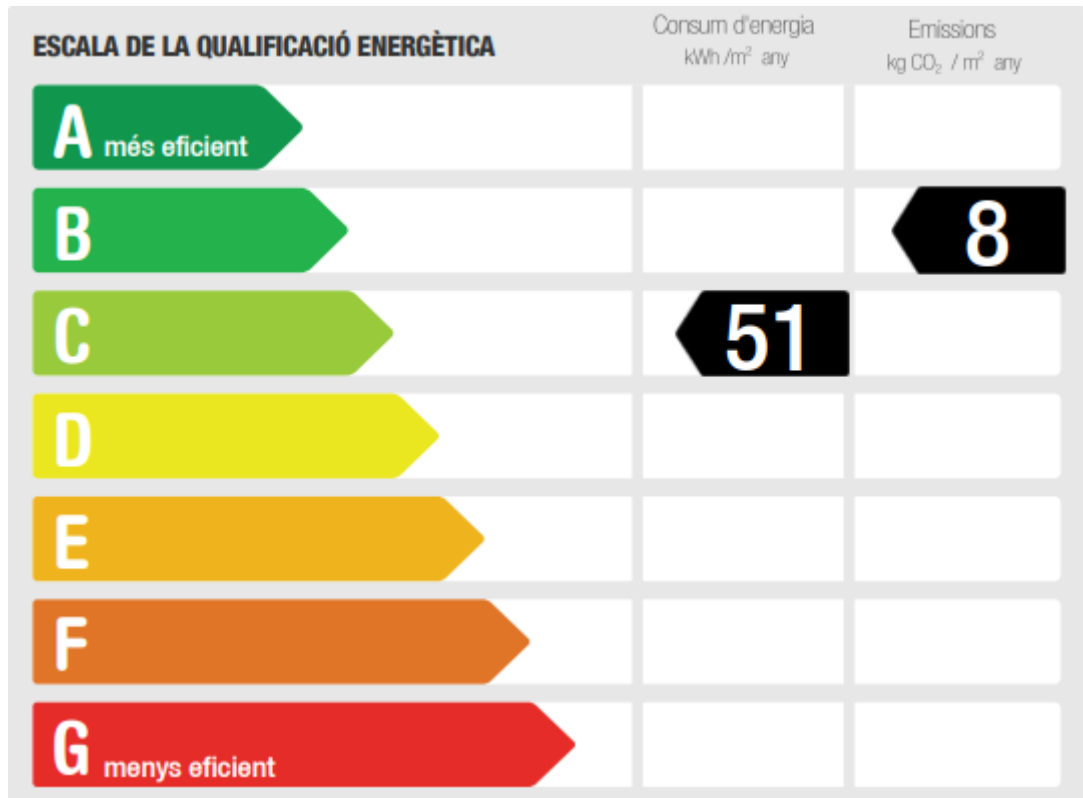
SITGES



NEW BUILD PENTHOUSE

SITGES

ENERGY INFORMATION



The information provided by the agency is offered by third parties and is believed to be reliable but is not guaranteed and must be independently verified. The buyer must verify the areas, dimensions and distances since they are only approximate. The expenses of patrimonial transmission (ITP), VAT, Notary and Land Registry are not included in the sale price and are borne by the buyer.